

KOENIG & BAUER

# APL Print & Apply



we're on it.



For more than 45 years we have been developing and manufacturing high quality coding technology products at our site in Veitshöchheim (DE) and Linköping (SE) locations. Our focus is on first-class quality, outstanding performance and all this in combination with unbeatable reliability. We're on it.

## High functionality for everyday use. **Coding** with the utmost reliability.



The Print & Apply technology is ideal for printing variable data and information directly and accurately applying it individually with respect to shape, colour and material onto a variety of products and packaging with pinpoint precision.

APL labelling solutions rely on the tried-and-test Zebra technology and can be modularly configured with different applicators. The Koenig & Bauer Coding portfolio offers models to meet your needs in every application to fulfil your individual coding requirements.

# Industry-independent diversity

## Food

Printing and applying labels just in time with a fully integrated labelling solution. Code your food safely and efficiently with a maximum degree of automation.



## Cardboard boxes

Label your packaged goods with the highest quality and pinpoint precision. Labelling around corners is also a simple task with our APL Rotary. For 200 % safety – also with direct proofing of the relevant information – to ensure a smooth logistics process.



## Tyres

Apply adhesive labels perfectly, flexibly and accurately onto your tyres. We automate your tyre labelling flexibly in the various process steps, even with different tyre sizes.





APL labelling systems code perfectly in all industries and on a wide variety of materials and surfaces.



### Pallets

Label your pallets from two sides with our APL-P, which doesn't need to be hidden behind a safety guard. If you pack your pallets in different heights, our APL-Robotman automatically finds the correct position for the label according to the GS1 standard. Even when you are relabelling, the APL-Robotman automatically finds the old label and applies the new label on top of it with pinpoint precision.



### Sensitive consumer goods

Due to the automatic product identification, our APL labelling system uses a tamp applicator to reliably apply labels to your sensitive goods with the required sensitivity.



### Building materials and wood

A robust design and applicators, which simply give way in the event of a collision, make the APL labelling system particularly reliable under harsh conditions.

The quick and easy  
teach-in function of  
the APL-Robotman  
make your production

**100 % agile**

**6 years**

without a warranty claim is testament to the top quality

In a direct market comparison, the  
attractive price-performance ratio  
with modular components is

**10 %  
cheaper**

**You want to adapt agilely to your production processes?**

APL Print & Apply systems are modular in design. They can be adapted to changing requirements by replacing just a few components. Everything is also already prepared for automated tasks or control systems.

**You want more flexibility with a sustainable Print & Apply system?**

The APL-Robotman is a labelling system with a cobot applicator. This means that you are well prepared for an agile production environment. The APL-Robotman works in close proximity to your employees, applying labels to any number of areas on virtually any product (EN ISO 13849- 1:2015, Cat. 3, PL d).

# In a nutshell.

**You are already familiar with the advantages of automated labelling?**

From a standalone solution to a connection to databases and ERP systems, you have the option of continuous integration. You will also find ready-to-use modules in our modular series for monitoring with a scanner or camera. You can select a customised user interface tailored to your requirements easily and cost-effectively.

**You don't want any expensive and bulky safety housings in your production?**

You do not need to operate APL labelling systems behind a safety guard or in a cage within the scope of the Machinery Directive. The APL pallet labelling system also does not need a safety housing. This is particularly reflected in its price.

**Tried-and-tested components and easy handling are important to you?**

We placed an emphasis on high-quality components from international market leaders when developing the APL product range: Siemens controllers, SMC pneumatics, Zebra printers and we realise the print image automation with NiceLabel software. We pass on the advantage of low-cost components with a broad cross-section of technology to you. You will appreciate the very easy integration and maintenance.

**You already enjoy complete freedom?**

The APL-Robotman readily applies labels flexibly to your products, even on an alternating basis and on different lines. The system is taught-in easily at the touch of a button and is therefore ready for different sequences at all times.

# More freedom when labelling



Light beacon

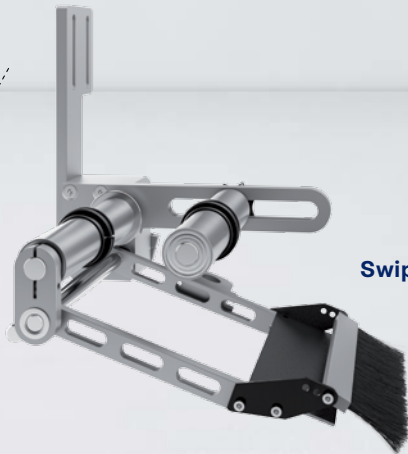
Control panel with a NiceLabel interface

APL

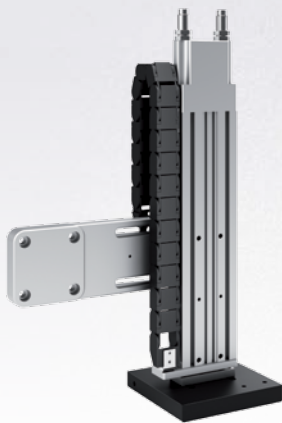
Zebra ZE500 4"/6" 300 dpi

Stand with a fixed or adjustable bracket

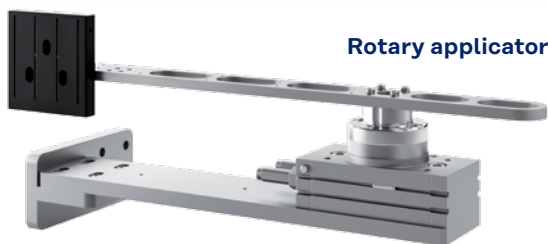




**Swipe applicator**



**Tamp applicator**



**Rotary applicator**



**APL-Robotman  
with a Cobot applicator**

## Wide selection of extras

### Label design

You have the option to generate print images from all common label design programs with the Zebra thermal transfer printer from the market leader.

In addition, we offer a free Windows printer driver that you can use to transfer content to the printer from all Windows programs. This means that existing print images are also easy to convert.

### Control panel with a customised user interface

Do you want to select the label directly on the device, add additional data or load the complete product configuration from there, then this is possible with a standardised or customised NiceLabel application interface.

### Barcode scanner

Do you also want to ensure after the labelling that you have printed the right barcode? Then use a barcode scanner on the applicator, which will check the labelled product immediately afterwards. If something is not right, you can decide if you want to reapply or reject the label and stop the labelling.

The equipment options described in this overview are only a few examples of the wide range of additions available.

## APL Print & Apply models



### APL with a swipe applicator

The easiest and most cost-effective type of labelling. The product is labelled in a linear movement. A brush or roller additionally presses the label onto the product, thus enabling labels to be applied to round or slightly bevelled surfaces as well.



### APL with a tamp applicator

The most diverse type of labelling. A tamp labels your product from one side, whilst the system is stationary or in motion. It is also possible to label around corners on products whilst the system is stationary. With a large selection of tamp pads, we offer you tried-and-tested solutions for a wide range of applications. The pads are operated electrically or pneumatically. The Flex pad also applies labels reliably if your product is not quite straight.

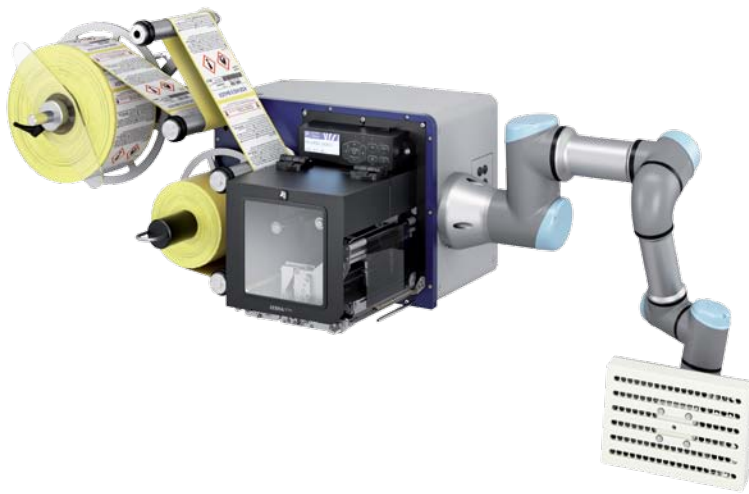
When sensitivity is required, simply use a sensitive foam pad and a proximity sensor to retract the tamp again at the right moment.



### APL with a rotary applicator

Apply labels to your product from two sides in one step or around corners with the APL-R. The applicator pad is mounted on a swivel axis and has a rounded edge; the APL applies the label first from the front and then over the edge on the side in the direction of travel. Alternatively, the coding can be done from the front and then directly from the side. You can therefore achieve wrap-around labelling with two APL Rotary devices.

APL Print & Apply solutions with thermal transfer printing and modular applicators are designed for modern production and high quality standards.



#### **APL-Robotman**

The APL-Robotman is the right labelling system if you want full agility for your production. It uses the cobot arm, which can be taught-in at the touch of a button, to apply labels to any areas of your product, even hard-to-reach areas (e.g. the inside of a crate).

If the position of the labelling varies, we fit an appropriate scanner to the Robotman. It searches over control markers to identify the label position where it applies the label with pinpoint precision.

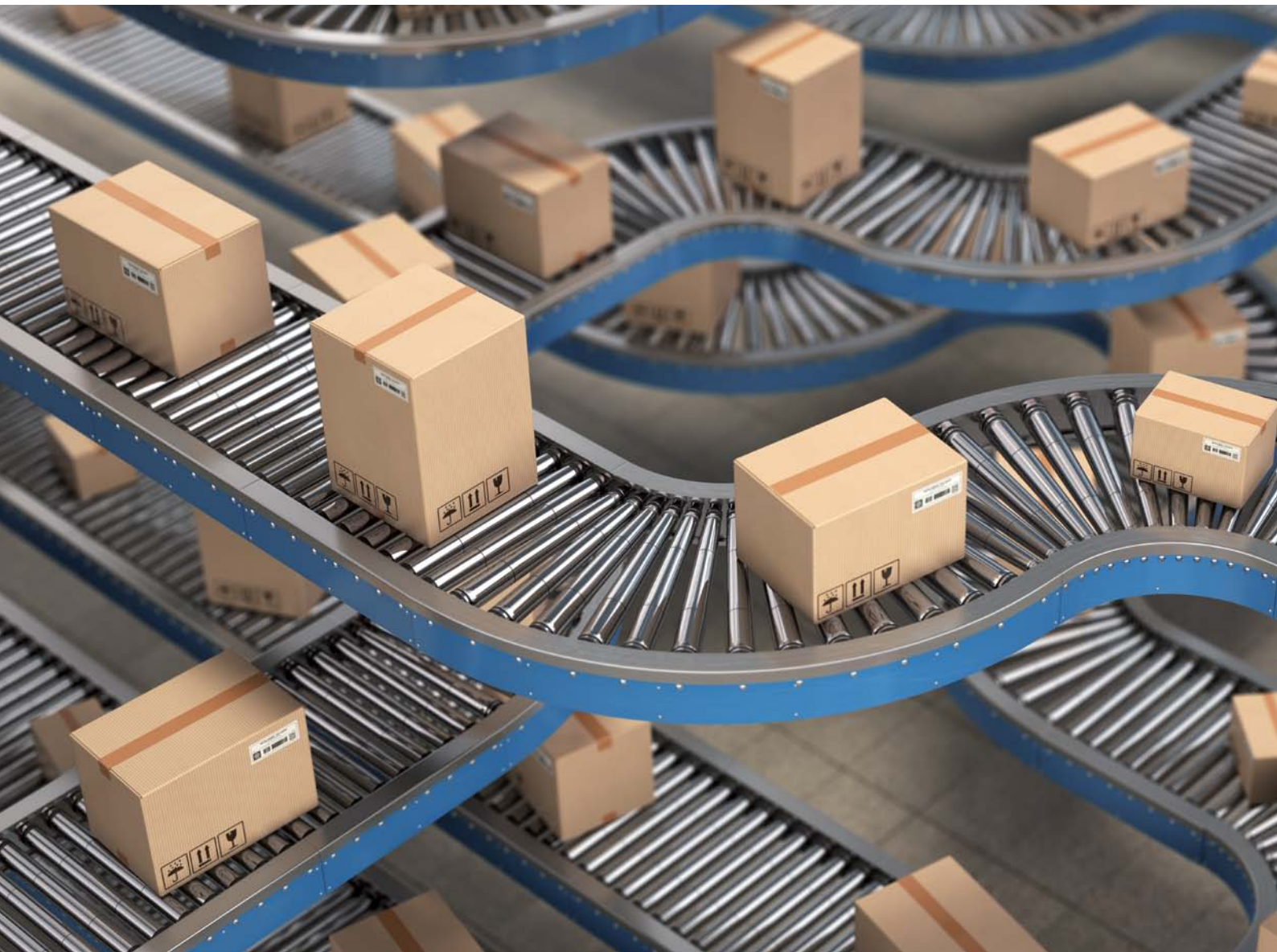
You need the Robotman for different tasks or products? Taught-in processes can be saved and easily reproduced. It only takes a few hours to teach-in new processes and you can do this yourself. This certainly makes the Robotman a member of your agile production.



#### **APL-pallet**

The APL pallet labelling system is a cost-effective standalone solution for the variable labelling of pallets. The compact system codes pallets reliably and safely. No additional safety housing or safety guard is required for using the APL pallet print & apply system within the scope of the Machinery Directive. This advantage saves money.





# The perfect components for safe production

Perfectly matched consumables  
make your coding even better.



**No matter where, no matter how –  
it applies whatever you want**

The modularly configurable APL labelling system prints labels and applies them with pinpoint precision. It can process adhesive labels in all common materials as well as labels with special adhesive properties – from plain labels to those with 10 different colours. Modern printing processes, such as HD flexo, screen, web offset, inkjet and digital printing, ensure the best printing results. Hot or cold stamping units can also be integrated into the processing chain. The precise positioning comes at the end – that is impressive quality!

From standard solutions to those tailored to your requirements – we will also be happy to assist you in reproducing them.

**Foils**

We have the right coloured foil for your labels. It enables a high print resolution and ensures the excellent print quality of your printed texts.

We would be happy to sample your labels in our in-house sample laboratory.







## 5 good reasons for choosing APL Print & Apply

01

Wear-free components  
optimise your costs.

02

Excellent availability of  
over 99 % provides true  
production reliability.

03

The modular design  
and expandability offer  
maximum flexibility.

04

Very easy to modify to meet the  
requirements of the future due to  
the numerous equipment options.

05

A competent global sales  
and service team supports  
you at all times.

# APL Print & Apply at a glance

## General technical data

### Labelling system

- Label roll Ø 300 mm or Ø 400 mm
- Dimensions (L x W x H) 890 x 480 x 440 mm
- Weight approx. 25 kg
- Controller Siemens Logo! 8

### TTO printer

- |   |   |
|---|---|
| • ZE500, 4"                                 | • ZE500, 6"                                 |
| • 16 - 114 mm wide<br>(incl. backing paper) | • 76 - 180 mm wide<br>(incl. backing paper) |
| • Max. foil length 900 m                    |   |

### Print

- 300 dpi

### Operation

- NiceLabel PC software
- Touch display with a customised user interface (optional)

### Printer language

- ZPLII

### Interfaces

- Serial
- Parallel
- USB
- Ethernet

### Product features

- Optional cleaning hood
- No safety guard is required within the scope of the Machinery Directive

### Power requirements

- Supply voltage (AC) 115 - 230 V / 50 - 60 Hz / 110 VA
- Air connection 6 bar, clean and dry compressed air
- Ambient temperature 20 - 95 °C, non-condensing

